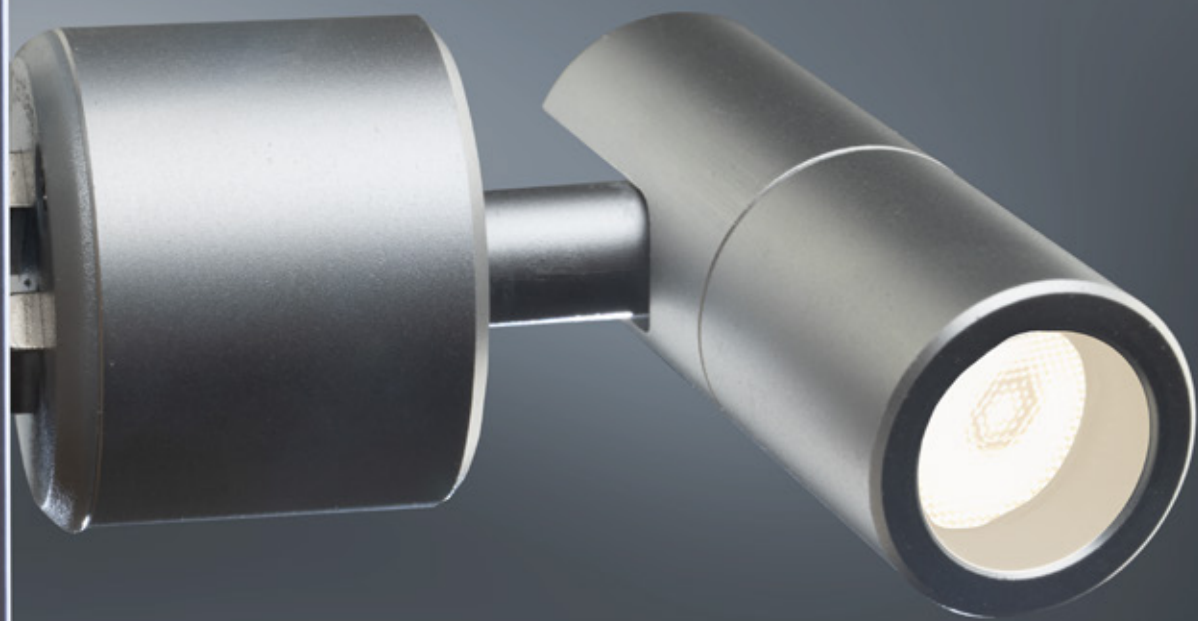


Microline-System

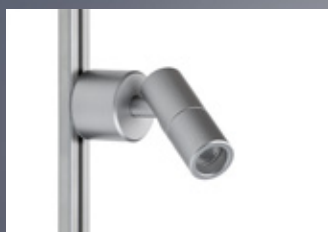
Schätze eindrucksvoll präsentieren

Presenting treasures impressively



Vitrinenleuchten - Microline-System

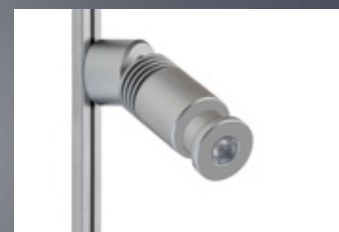
Showcase spots for Microline system



VT 2 Kardan
Seite / page 123



VT 3 Tube
Seite / page 123

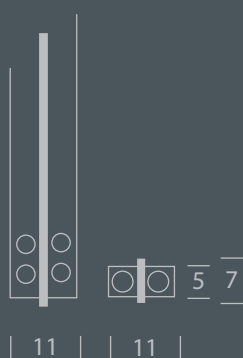


VT 3 Focus
Seite / page 123

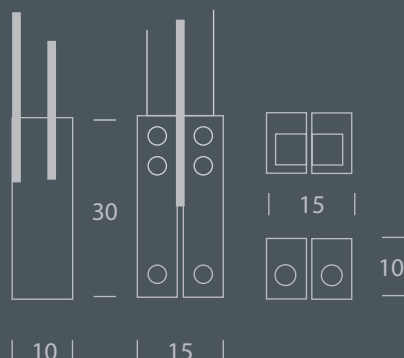
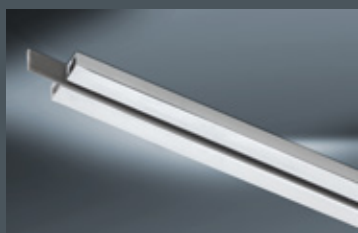


Microline

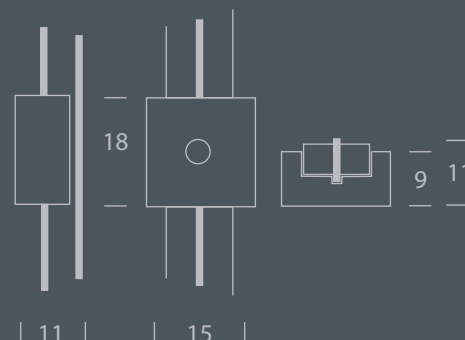
Systemkomponenten / system components



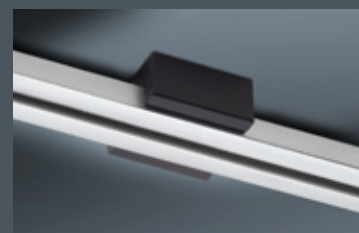
Schiene
Track



Einspeisung
Feed



Halter
Bracket



Schiene / Track 2 m

Anschluss an jeder Seite der Schiene, individuell kürzbar /
Connection on each side of the rail, can be shortened individually

Best.-Nr. / Art.-No.:	Ausführung / Version
3-308-20-9	silber matt / silver matt
3-308-20-2	schwarz-velour / black velour

Einspeisung / Feed

Einspeisung für gekürzte Schiene

Best.-Nr. / Art.-No.:	Ausführung / Version
4-425-31-9	silber matt / silver matt
4-425-31-2	schwarz / black

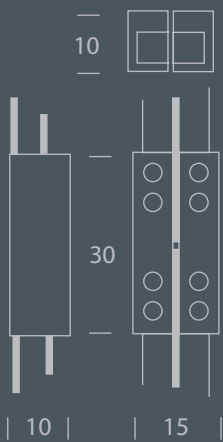
Einspeisung über Magnetadapter / Feed via magnetic adapter

Best.-Nr. / Art.-No.:	Ausführung / Version
4-425-32-2	schwarz / black

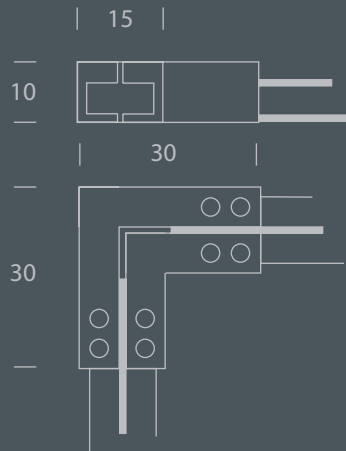
Halter / Bracket

Best.-Nr. / Art.-No.:	Ausführung / Version
4-425-06-9	silber matt / silver matt
4-425-06-2	schwarz / black

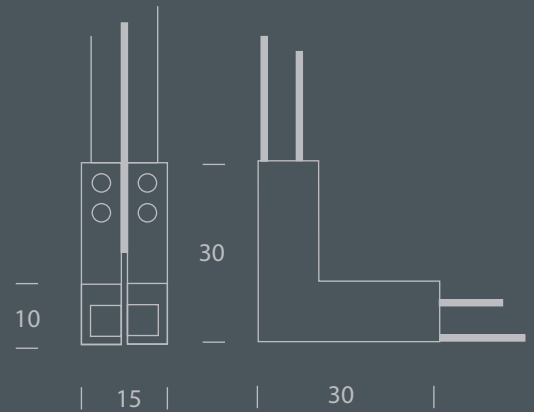




Verbinder, gerade
Straight connector



L-Verbinder, horizontal
L-connector, horizontal



L-Verbinder, vertikal
L-connector, vertikal



Verbinder, gerade / Straight connector

Best.-Nr. / Art.-No.:	Ausführung / Version
4-425-45-9	silber matt / silver matt
4-425-45-2	schwarz / black

L-Verbinder, horizontal / Horizontal L-connector

Best.-Nr. / Art.-No.:	Ausführung / Version
4-425-51-9	silber matt / silver matt
4-425-51-2	schwarz / black

L-Verbinder, vertikal / Vertical L-connector

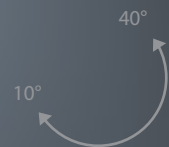
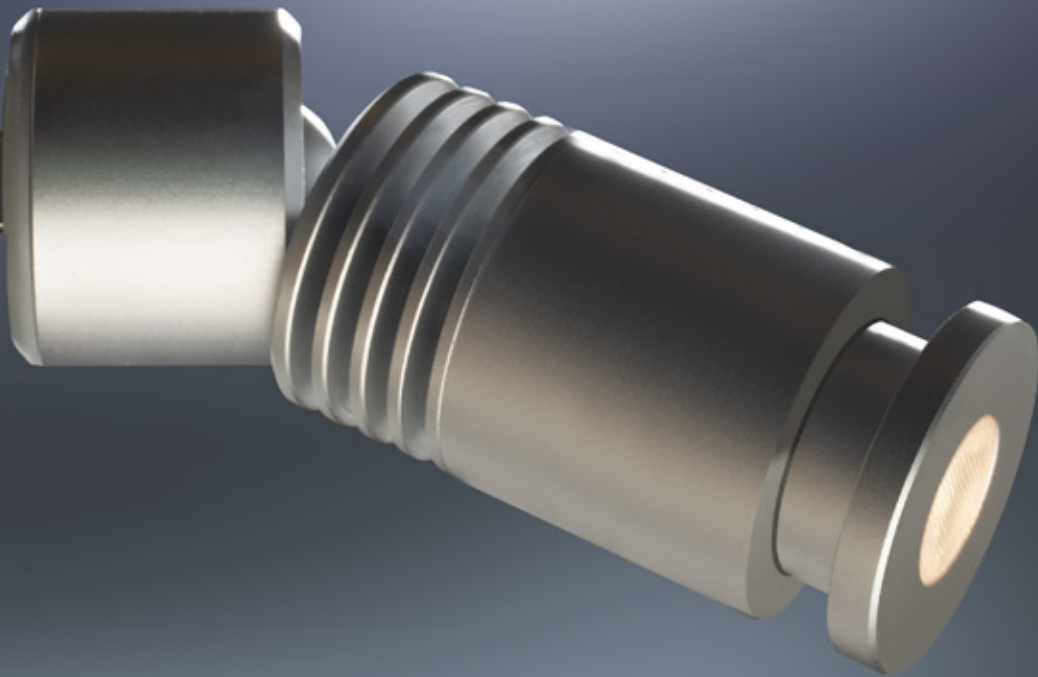
Best.-Nr. / Art.-No.:	Ausführung / Version
4-425-50-9	silber matt / silver matt
4-425-50-2	schwarz / black

Transformatoren für Microline-System (Mean-Well) / Transformers for Microline system

Best.-Nr. / Art.-No.:	Ausführung / Version
9-607-41-1	40 VA / 12 V
9-607-60-1	60 VA / 12 V
9-607-42-1	40 VA / 24 V

Microline Spots

Klein aber leistungsstark



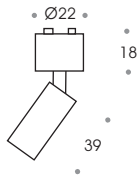
Spot VT3 Tube Focus,
fokussierbar

Spots für das Microline-System

LED Spots mit Magnetadapter für Microline-Schiene.
Leuchtenkopf drehbar: 40° schwenkbar, 355° drehbar.
Vom Hersteller auswechselbarer Chip. 5 Jahre Garantie auf das LED-Modul.

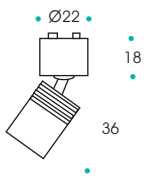
LED spots for Microline-track.
Luminaire head rotatable: 40° vertically, 355° horizontally.
Manufacturer replaceable chip. 5 year guarantee on the LED-module.





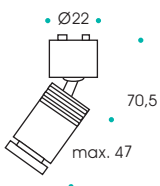
Spot VT2 Kardan

Bestell-Nr.	Leuchte	Watt	Lumen	Kelvin	CRI	Abstrahlwinkel
Art.-No.:	Luminaire	Power (W)	Lumens	Kelvins	CRI	Beam angle
2-330-02-2	schwarz / black	1	70	3000	> 95	20°
2-330-02-9	silber matt / silver matt	1	70	3000	> 95	20°
2-334-02-2	schwarz / black	1	70	4000	> 95	20°
2-334-02-9	silber matt / silver matt	1	70	4000	> 95	20°



Spot VT3 Tube

Bestell-Nr.	Leuchte	Watt	Lumen	Kelvin	CRI	Abstrahlwinkel
Art.-No.:	Luminaire	Power (W)	Lumens	Kelvins	CRI	Beam angle
2-330-03-2	schwarz / black	2	120	3000	> 95	20°
2-330-03-9	silber matt / silver matt	2	120	3000	> 95	20°
2-334-03-2	schwarz / black	2	120	4000	> 95	20°
2-334-03-9	silber matt / silver matt	2	120	4000	> 95	20°



Spot VT3 Tube Focus

Bestell-Nr.	Leuchte	Watt	Lumen	Kelvin	CRI	Abstrahlwinkel
Art.-No.:	Luminaire	Power (W)	Lumens	Kelvins	CRI	Beam angle
2-330-04-2	schwarz / black	3	175	3000	> 95	10° - 40°
2-330-04-9	silber matt / silver matt	3	175	3000	> 95	10° - 40°
2-334-04-2	schwarz / black	3	175	4000	> 95	10° - 40°
2-334-04-9	silber matt / silver matt	3	175	4000	> 95	10° - 40°